

## RADIO2IP

FM/AM/DAB+ Radio Distribution for IT/IPTV and Streaming Networks

*Part of the TeleDelta x2IP product range*



Part of the TeleDelta x2IP Product Range, the RADIO2IP is a dedicated multichannel FM, AM and DAB+ Radio to IT/IPTV and streaming transcoder, designed for monitoring, distribution and delivery of FM, AM and DAB+ radio services to one or more end-users devices with an private IT, IPTV/ public Internet environment.

The scalable RADIO2IP platform is can be built and ordered to meet customers requirements with each platform supporting up to 32x FM + 32x AM and DAB+ radio services.

Radio2IP is a multi-format codec platform allowing operators to select desired encoding formats including AAC, AAC-LC, AAC-HE, AAC-HE2, MPEG2/L1 and MPEG2/L3 and assign output broadcast address and streaming bitrates.

Radio2IP allows end-devices including PCs, monitoring devices, professional decoders / receivers and IPTV set-top-boxes to access and listen to Radio2IP broadcast streams.

Radio2IP is proudly made in Australia by TeleDelta.

### RADIO2IP Key Points

- Dedicated FM/AM and DAB+ Multichannel Encoding Platform
- Supports FM, AM and DAB+ Radio Sources
- Up to 32FM+AM+DAB+ Services per system
- Digital encoding for IP delivery
- User defined output bitrate 32~384Kbps
- Assignable output streaming addresses
- Built-In test and Tone Generators
- MPEG2/L3, L1, AAC-LC, AAC-HE2, AAC-HE, AAC encoding support
- UDP+IGMP Multi, Unicast + RTMP streaming
- Dedicated web-interface for Management
- Optional recording, storage and Playback



Service	Frequency	Protocol	Bitrate	Status	Settings	Refresh
Triple M	104.900MHz	udp://224.3.2.8:1234	31,456b/s	✓	⚙️	🗑️
Austral FM	87.800MHz	igmp://224.3.2.2:1234	130,408b/s	✓	⚙️	🗑️
Bondi Beach	88.000MHz	udp://224.3.2.3:1234	33,256b/s	✓	⚙️	🗑️
2RDJ	88.100MHz	udp://224.3.2.4:1234	32,624b/s	✓	⚙️	🗑️
BBC	88.900MHz	udp://224.3.2.5:1234	32,552b/s	✓	⚙️	🗑️
2GLF	89.300MHz	udp://224.3.2.6:1234	65,384b/s	✓	⚙️	🗑️
2RES FM	89.700MHz	udp://224.3.2.7:1234	127,056b/s	✓	⚙️	🗑️
ABC1	92.900MHz	igmp://224.3.2.1:1234	127,056b/s	✓	⚙️	🗑️
FBI	94.500MHz	udp://224.3.2.9:1234	31,440b/s	✓	⚙️	🗑️
2PTV	95.300MHz	udp://224.3.2.10:1234	127,056b/s	✓	⚙️	🗑️
ABC2	95.700MHz	udp://224.3.2.11:1234	33,224b/s	✓	⚙️	🗑️
Nova	96.900MHz	udp://224.3.2.12:1234	190,592b/s	✓	⚙️	🗑️
SBS	97.700MHz	udp://224.3.2.13:1234	66,288b/s	✓	⚙️	🗑️
2000	98.500MHz	udp://224.3.2.24:1234	65,728b/s	✓	⚙️	🗑️
2NBS	99.300MHz	udp://224.3.2.14:1234	127,056b/s	✓	⚙️	🗑️
Triple J	98.900MHz	udp://224.3.2.15:1234	64,072b/s	✓	⚙️	🗑️
2NBS	99.300MHz	udp://224.3.2.16:1234	64,272b/s	✓	⚙️	🗑️

Above: Multichannel Stream Encoding

For more information please contact your local distributor or [sales@teledelta.com](mailto:sales@teledelta.com)



## RADIO2IP

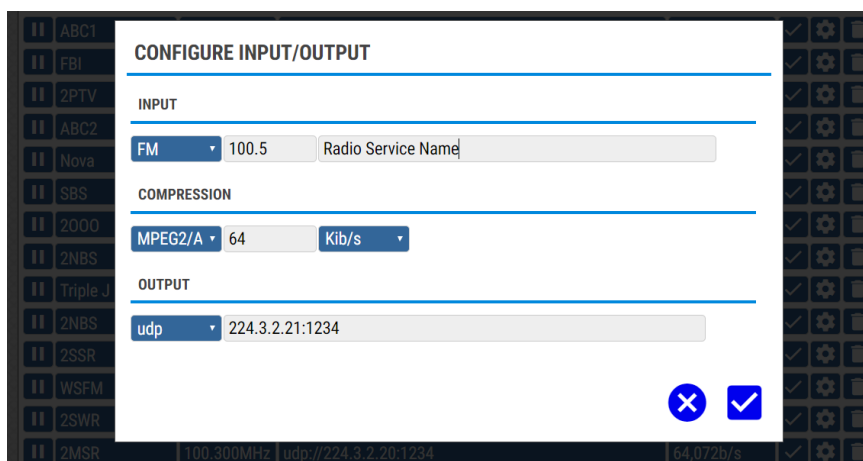
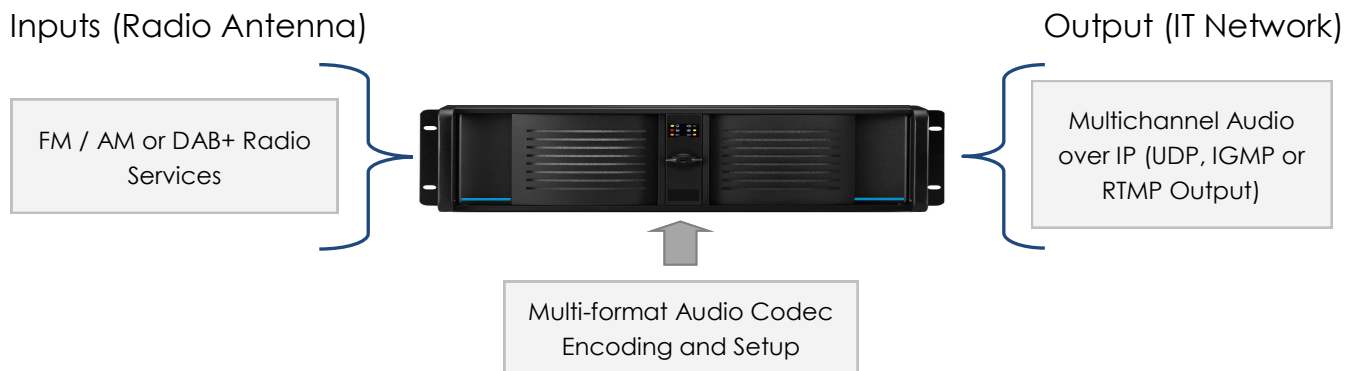
FM/AM/DAB+ Radio Distribution for IT/IPTV and Streaming Networks

*Part of the TeleDelta x2IP product range*

### TeleDelta Radio2IP Deployment Applications

- FM, AM ad DAB+ Radio capture and monitoring
- IPTV Radio service distribution
- Audio over IP distribution / (CDN) content delivery networks
- Public Internet Radio Broadcasting
- Local and Regional service monitoring
- Internet Radio Rebroadcast
- Hotels, Hospital and Facility IT network distribution
- Streaming IP services
- Hotels and Accommodation

### Basic System Topology



Right: Simple User-interface allows setup and configuration of input and output channels

Please refer to next page for Radio2IP Specifications

For more information please contact your local distributor or [sales@teledelta.com](mailto:sales@teledelta.com)



## RADIO2IP

FM/AM/DAB+ Radio Distribution for IT/IPTV and Streaming Networks

*Part of the TeleDelta x2IP product range*

FM Radio Tuner (Inputs)	
Inputs	1x RF Input (BNC)
Tuner Frequency Range	87.5MHz to 108.50MHz (25kHz steps)
Maximum Input	150mV RMS
De-emphasis	Configurable as 50us or 75us
Audio Sampling Rate	From 48kHz
No. of Stations	Specified - 6,12,18, 24, 32 Input options

AM Radio Tuner (Inputs)	
Inputs	1x RF Input (BNC)
Tuner Frequency Range	500kHz to 1710kHz in 1kHz steps
Sensitivity	50uV for 40dB S/N
Filter Attenuation	82dB at 15kHz
Audio Sampling Rate	From 22.05kHz
No. of Stations	Specified - 6,12,18, 24, 32 Input options

DAB+ Radio Tuner (Inputs)	
Inputs	1x RF Input (BNC)
No. Ensembles supported	Up to 4 (1,2,3,4)
Tuner Frequency Range	Band III (174-240Mhz)
Maximum Channels	128* (Ensembles based)

Audio / IP Encoding	
Audio Encoding	MPEG2/L3, MPEG2/L1, MPEG2/AAC-LC, MPEG2/AAC-MPEG2/HE2, MPEG2/AAC-HE, MPEG2/AAC
Bit-rate	32-384Kbps
Output Formats	Unicast / Multicast UDP, IGMP, RTMP
Output Stream Addresses	User selectable

System and Control	
Management / Configuration	Web-based Interface
IP Management	Dedicated Management IP LAN
Data Management	Separate Data IP LAN
Physical	2RU Rack-mount (Up to 4RU depending on configuration)
Operating Temperature	0~45 degrees ambient

Please refer to next page for Radio2IP Ordering Information

For more information please contact your local distributor or [sales@teledelta.com](mailto:sales@teledelta.com)



## RADIO2IP

FM/AM/DAB+ Radio Distribution for IT/IPTV and Streaming Networks

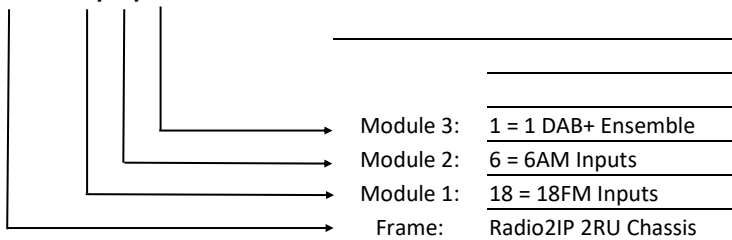
*Part of the TeleDelta x2IP product range*

### Ordering Options

Part No.	Ordering Suffix	Description
<b>Frames:</b>		
RADIO2IP-X/Y/Z (X=FM, Y=AM, Z=DAB)		2RU Radio2IP Server, Multichannel Codec Encoding - Selectable UDP, IGMP, RTMP streaming output
<b>Modules:</b>		
6FM Input	6	6x FM Input
12FM Input	12	12x FM Input
18FM Input	18	18x FM Input
24FM Input	24	24x FM Input
32FM Input	32	32x FM Input
6AM Input	6	6x AM Input
12AM Input	12	12x AM Input
18AM Input	18	18x AM Input
24AM Input	24	24x AM Input
32AM Input	32	32x AM Input
32AM Input	32	32x AM Input
1DAB+ Ensemble	1	1x DAB+ Ensemble Input
2DAB+ Ensemble	2	2x DAB+ Ensemble Input
3DAB+ Ensemble	3	3x DAB+ Ensemble Input
4DAB+ Ensemble	4	4x DAB+ Ensemble Input

### How to Order

**Radio2IP- 18 / 6 / 1**



For more information please contact your local distributor or [sales@teledelta.com](mailto:sales@teledelta.com)

