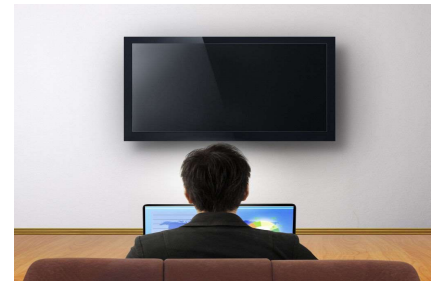
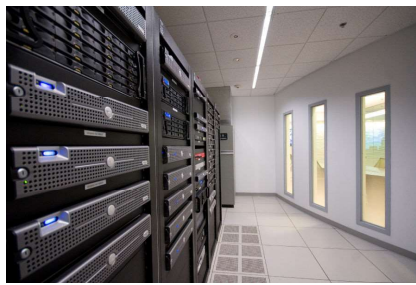


# LiveStream Recorder

## Multi-Stream Content Capture & Recording



The LiveStream Recorder sits at the heart of the TeleDelta LiveStream Platform; providing real-time data capture, recording and distribution of multiple audio/video IP streams for live-viewing, storage and archival purposes.

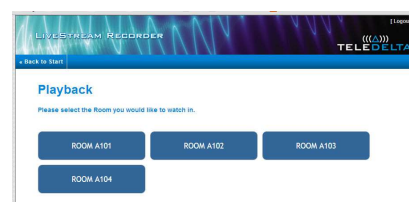
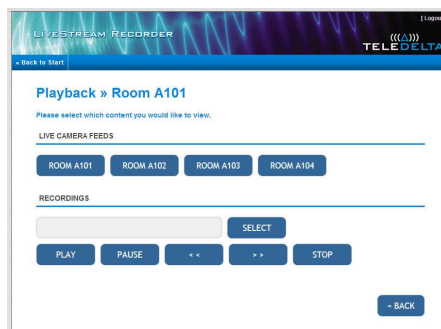
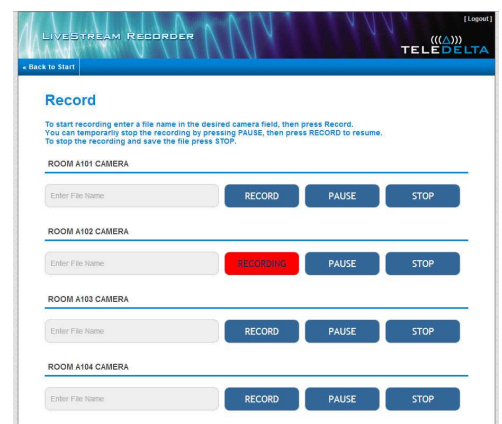
With the ability to record up to full HD (1080p, 1080i and 720p) along with standard definition program content in both MPEG-4 and MPEG-2 video formats at varying bit-rates the Linux based rack-mount LiveStream recorder provides an expandable platform for content capture and recording needs into the future.

Designed to operate stand-alone or as part of an existing control system the LiveStream platform is agnostic in its control choice allowing integration with a wide range of external control systems including AMX and Crestron. Users can utilise the LiveStream operating software for direct access (locally or remotely) to the recording platform content management and recording applications if third party control systems are not required.

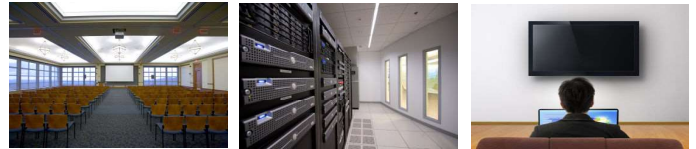
With scalable hardware options the LiveStream Recorder is powered by the latest Intel I Series processors with expandable high speed drives (1TB standard) and RAID storage configurations available as an option, the LiveStream Recorder software can be configured to record up to 10 streams of content at a time in varying resolutions and formats.

### Key features

- Capture multi-format, multi-resolution audio/video streams simultaneously
- Simultaneously capture, record and playback content
- Third-party control system integration
- Highly reliable Linux based operating platform
- User focused software applications built-in
- Record up to 10 video streams at a time (hardware dependant)
- Rack-mount, expandable hardware platform
- Integrate into existing or new IPTV systems



## LiveStream Specifications



<b>System</b>	
Management (Local)	LiveStream Recorder Application
Management (Remote)	Remote HTTP interface
Third Party	Serial or XML commands
<b>Encoding</b>	
Rates	Variable Rate Encoding (1 ~ 20 Mbits) per Input
Input Encoding Formats	MPEG-2, MPEG-4 (H.264)
Input Resolution (SD)	576i (PAL) @ 50/60 Hz
Input Resolution (HD)	1280x720p @ 50/60 Hz 1920x1080i @ 50/60 Hz 1920x1080p @ 50/60 Hz
Number of input streams	Up to 10 (hardware dependant)
Transport Streams Supported	MPTS and SPTS
IP Encapsulation	Multicast/Unicast UDP and RTP
Writing (Output)	Multiple UDP / RTP transport streams
Input Bitrate	Up to 1 Mib per second
IGMP	Supported
<b>Content Management</b>	
Management	LiveStream Recorder Content Management
Format Conversion	HD to SD conversion (optional)
Storage Capacity Remaining	Visual Notification / Alerts (optional)
<b>Playback</b>	
Multicast Real-time / Live Playback of captured AV streams (included)	
On-demand content viewing, live - during or after the event (optional)	
Saved content: View un-edited content from LiveStream recorder on-demand (optional)	
Preview Mode: Real-time recorder based monitoring	
<b>Networking</b>	
Physical	2x RJ45 GbE Ports
<b>Physical</b>	
Chassis	Rack-Mounted 2RU (standard)
Alarms	Front Panel LED and audible alarm notification
Power Supply	220-240V AC
Operating Environment	0 ~ 42 degrees (ambient temp)
System Processing	Intel i5 / i7 (3rd Generation)
RAM	16 GB DDR3 1600 MHz standard (expandable)
Storage (Internal)	1 TB standard (expandable)
External	2.5 inch and 3.5 inch portable drives
RAID	optional

Due to varying system requirements the above specifications may change over time. Please consult your supplier for the last information.

